



HEALTHY NATIVE YOUTH

**WE WILL START AT 10:00 AM PST.
TALK SOON!**

Intro to Evaluation: Gathering Info to Improve
Programs



HEALTHY NATIVE YOUTH

**INTRO TO EVALUATION: GATHERING INFO TO IMPROVE
PROGRAMS**

GUEST SPEAKERS: ALEXIS CONTRERAS & NICOLE TREVIÑO,
WITH DR. WILLIAM LAMBERT JOINING

October 9, 2019, from 10-11 am PST



Today's Agenda

- **Welcome & Welcome Back!** (3 minutes)
- **The Backdrop of Research in Indigenous Communities** (5 minutes)
- **Planning Process** (20 minutes)
- **Interpreting Data for Your Community** (20 minutes)
- **Discussion Time** (10 minutes)
- **Closing** (2 minutes)

Welcome & Welcome Back!

4



Use the Chat Box to tell us:

1. Your Name & Role
- 2. Email Address**
3. Any fears or uncertainties about Evaluation?

Research in Indigenous Communities

...with Alexis Contreras, (*Grand Ronde*), National Indian Child Welfare Association (NICWA)

Email: alexis@nicwa.org

Phone: 503-222-4044 ext. 132



NICWA

National Indian Child Welfare Association
Protecting Our Children • Preserving Our Culture



**HEALTHY
NATIVE
YOUTH**

Impacts of Unethical Research on our Tribal Communities



6

Examples of Unethical Research in Indigenous Communities:

Havasupai Tribe

- Blood samples to study links between genes and diabetes
- Later, without permission, samples were used to study things like schizophrenia, migration, and inbreeding

Impacts on Community:

- they felt lied to
- they did not feel their beliefs and culture were respected
- they did not have a choice about how their blood was used, which are taboo for Havasupai

Barrow Alcohol Study

- In 1980, sociology researchers released a stigmatizing report to the public called the Barrow Alcohol Study about the Inupiat Eskimos of Alaska's North Slope

Impacts on Community:

- The report was released without the permission or knowledge of the tribe
- Created a regional mistrust of research

Centering Community in the Process



How to be Community Centered:

- ☒ *Focus on Community Needs*
- ☒ *Use Community-Based Participatory Research*
- ☒ *Meet Frequently with Evaluators & Research Staff*
- ☒ *Remind community of Tribal Sovereignty rights*

Why is Research & Eval Important?



Evaluation Can:

- **Identify**
 - ▣ Community Needs
 - ▣ Important Issues
- **Assist in Program Design**
 - ▣ Identifies Areas of Need
 - ▣ Shape Content
 - ▣ Services
 - ▣ Capacity/ Prioritization

Helps

- **Decision Making**
 - ▣ Relationship Building
 - ▣ Community Awareness



Resources

9

At the conclusion of the course, participants will have completed the following required training for the conduct with human subjects:

- ❑ Research with AIAN Communities
- ❑ The History of Ethical Regulations
- ❑ What is Human Subjects Research?
- ❑ Institutional Review Board (IRB)
- ❑ Risks and Benefits from Research
- ❑ Ensuring Confidentiality and Managing Risk
- ❑ Informed Consent
- ❑ Vulnerability
- ❑ Children in Research
- ❑ Unanticipated Problems and Reporting Requirements in Research

https://els.comotion.uw.edu/express_license_technologies/rethics-research-ethics-training-for-health-in-indigenous-communities



Planning Process

...with Alexis Contreras, (*Grand Ronde*), National Indian Child Welfare Association (NICWA)

Email: alexis@nicwa.org

Phone: 503-222-4044 ext. 132



NICWA

National Indian Child Welfare Association
Protecting Our Children • Preserving Our Culture

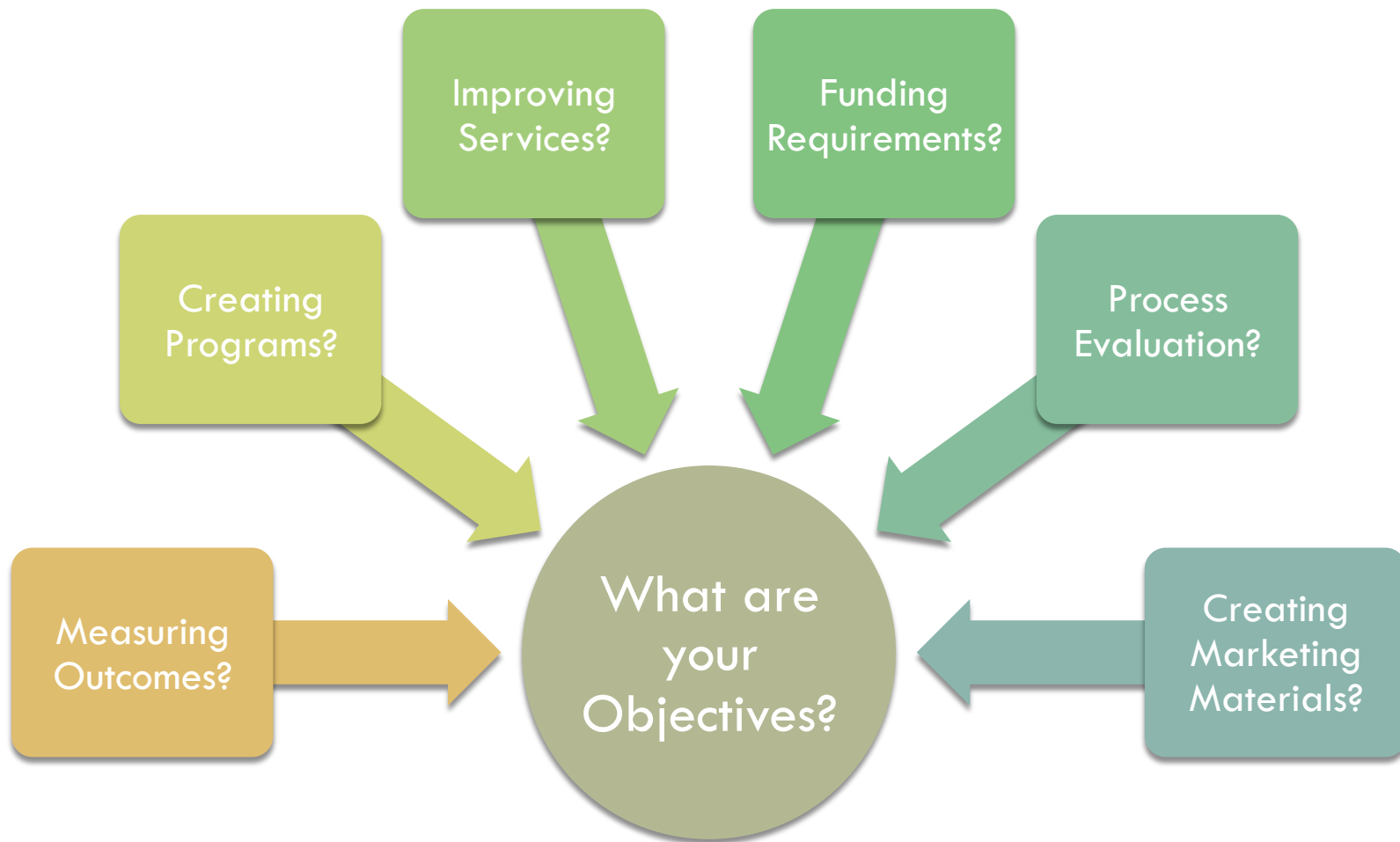


**HEALTHY
NATIVE
YOUTH**



Objectives of Evaluation

11





Examples from NICWA

12



NICWA Training Evaluations

Helpful advice

Tool for the trainer to improve

Quotes to share with
constituents



Grandfamilies Evaluations

Showing outcomes to our
funder



Evaluation steps

13

What question are you trying to answer?



How will the information be collected?



Who are you collecting information from?
How will you invite participants?



Evaluation steps cont.

14

What information are you trying to collect?

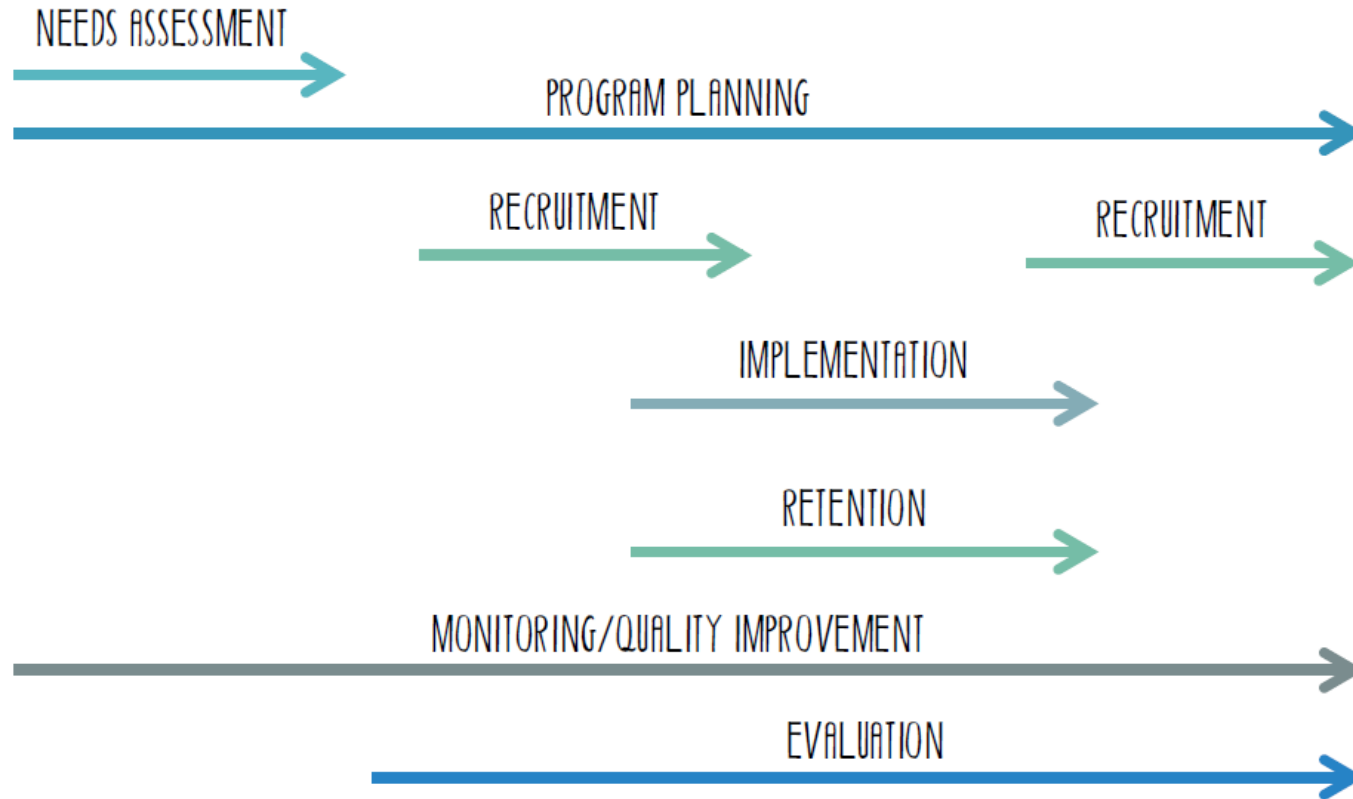


What is your evaluation timeline?



Create a workplan

PROGRAM IMPLEMENTATION TIMELINE



Methods (how will you collect?)

16

- Survey
- Interviews or focus groups (structured or unstructured)
- Observation with filling out ratings forms on what is being observed
- Review of records (e.g., health or administrative data, etc.)
- Bingo game



Artist: Marcus Cadman (Navajo/Kickapoo)



BINGO Template

17

BINGO! Collect Community-based Feedback

This activity was adapted from the National Indian Child Welfare Association (NICWA).

Activity Overview: BINGO! Collect Community-based Feedback (~60-120 minutes)

Activity Purpose: Bingo is a fun activity that can bring community members together in one place. Organizing a bingo night can be a great forum to collect community-based data that involves many community members—from youth to elders.

Community-based data can be around any topic you are hoping to gather community input on. For example you can collect data on: cultural strengths, program feedback, services feedback, after-school activities, satisfaction surveys, community-needs assessment, health topics, feedback on youth data reports.

Materials:

- Bingo cards (number varies by number of people and number of games)
 - You can print out free bingo cards here:
<http://myfreebingocards.com/numbers/1-75>
- Bingo markers or daubers
- Individual slips of paper with each bingo number (75)
 - If you play more than one round, have 75 number slips for each round.
- Survey or Feedback questions
- Pens (enough for each participant)
- Flipchart or whiteboard
- Markers
- Prizes (e.g. t-shirts, posters, coffee mugs, scarves, etc. Include one special 'wild card' prize)
- Thank you gifts (e.g. gift cards, coffee gift cards, museum passes, etc.)

Other Considerations & Recommendations



18



Site & Tribal Agreements

As part of agreements with the regional sites and tribal councils, the IYG AI/AN research team may share participant information with each other to better understand the results of the project.

MEMORANDUM OF AGREEMENT

BETWEEN THE

INSERT

AND THE

NORTHWEST PORTLAND AREA INDIAN HEALTH BOARD

"Evaluation of NATIVE It's Your Game"

December 31, 2013 – June 31, 2015

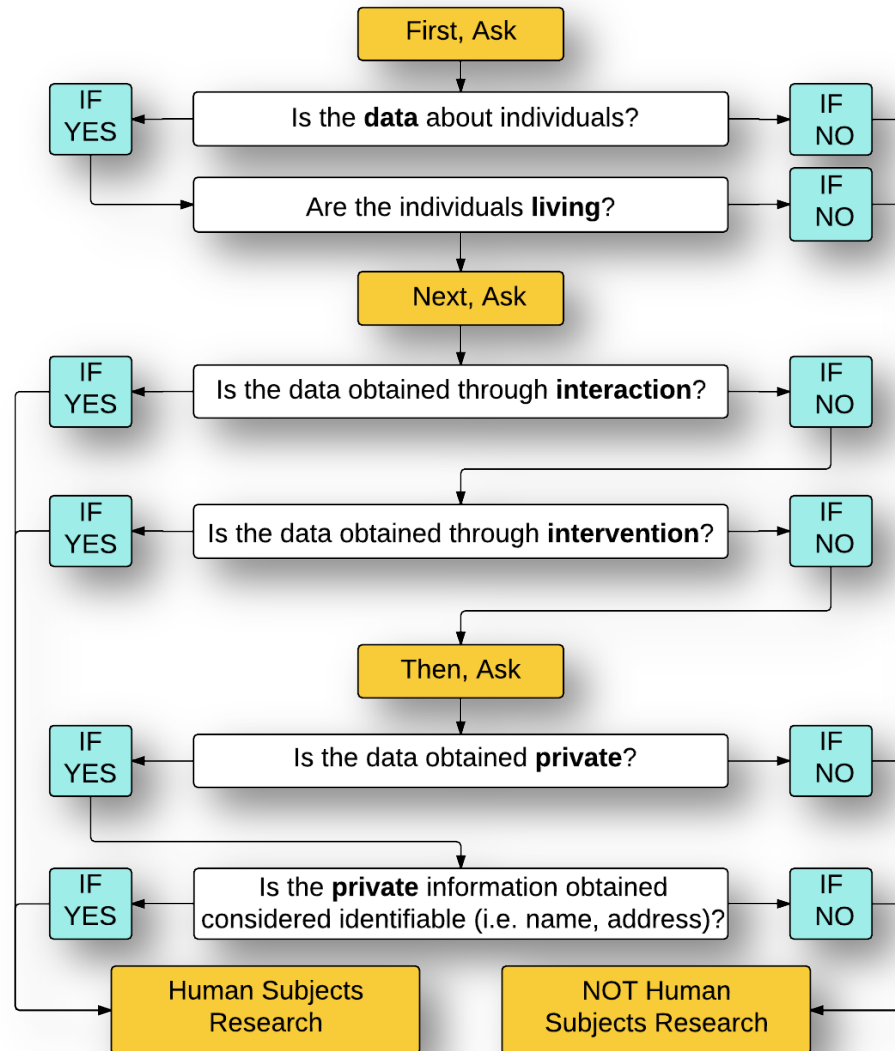
THIS AGREEMENT, effective from December 31, 2013 – June 31, 2015, is between the Northwest Portland Area Indian Health Board (NPAIHB) and the **INSERT** herein called the NPAIHB and the **INSERT**.

WHEREAS, the NPAIHB is interested in evaluating an evidence-based Teen Pregnancy and Sexually Transmitted Infections (STI) prevention curriculum for American

- Build evaluation partnerships
- Approval from tribal leaders
- Agreements (may need 1 or all)
 - ▣ Data-sharing Agreements
 - ▣ Memorandum of Agreements
 - ▣ Tribal Agreements
 - ▣ Confidentiality Agreements
- Understand protocols of the community
- Involve Community & YOUTH

Will your evaluation need an IRB review?

19



Discussion Time: Use the Chat Box...



How do you
involve youth
in your
evaluation
process?

Interpreting Data

...with Nicole Treviño, Nicole Treviño Consulting,
Email: info@nicoletrevino.com

Phone: 512.827.7101



Community-Centered Research & Evaluation



22





Community Engagement In Data Interpretation

23



Present Data

Create preliminary
data presentations
or infographics

Gather Community
Insights & Feedback



Data Party!

Make these fun
events that
encourage folks to
play with the data
and ask questions
that you might not
think of



Community Lens

Have folks identify
the best ways to
present the data and
the words or pictures
to use



Distribute

Ask folks where and
how to distribute
findings- who should
know about the
results and how
should we tell them?

You're Doing This For the Community – Remember to Involved Folks

Discussion Time: Use the Chat Box...

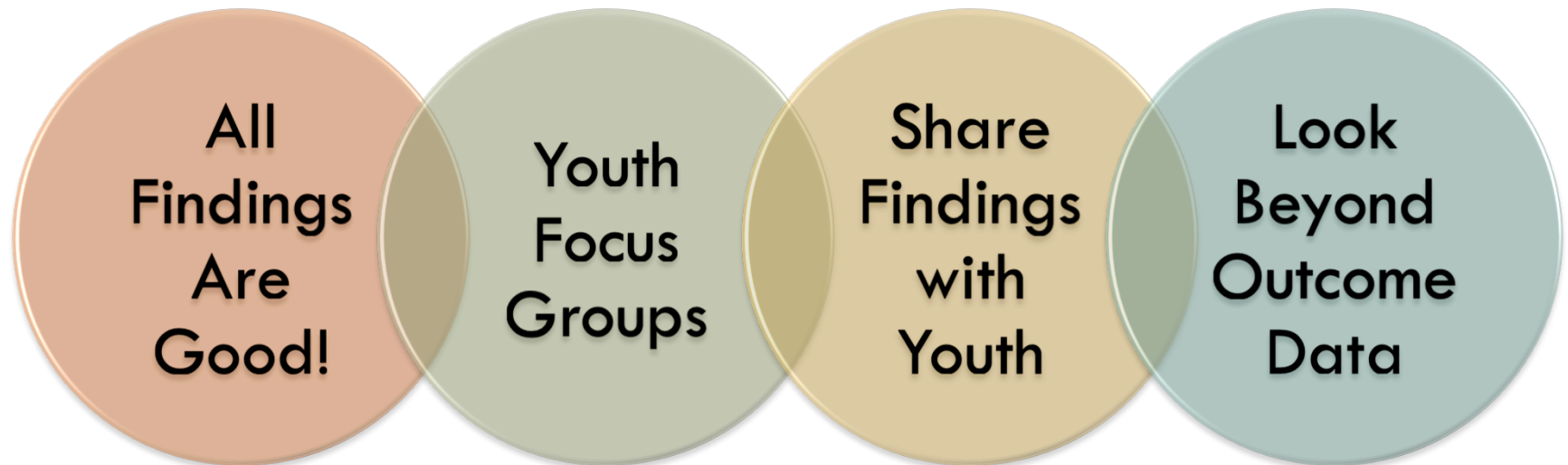


How has data
or evaluation
informed your
programming?

Using Data to Inform Programming



25



Process Evaluation & Quality Improvement Monitoring



Key Areas To Monitor

- Program Design Process
- Program Planning Process
- Implementation & Implementation Site Coordination
- Partnerships & Contracts
- Evaluation Process
- Staffing, Training & Development
- Fidelity Monitoring & Adaptation

Keep It Simple

- Track Strengths, Challenges, Ideas for Improvement
- Use information to make meaning of your outcome evaluation and determine future program improvements

Maintain the Community's Power in the Evaluation Process



27

- Continuously come back to the community to help drive your process and make meaning of your findings.
- Have youth, families, and community partners & leaders inform key decisions like how to use and present their data, what improvements to make in the process, and how to shape future programs and services.



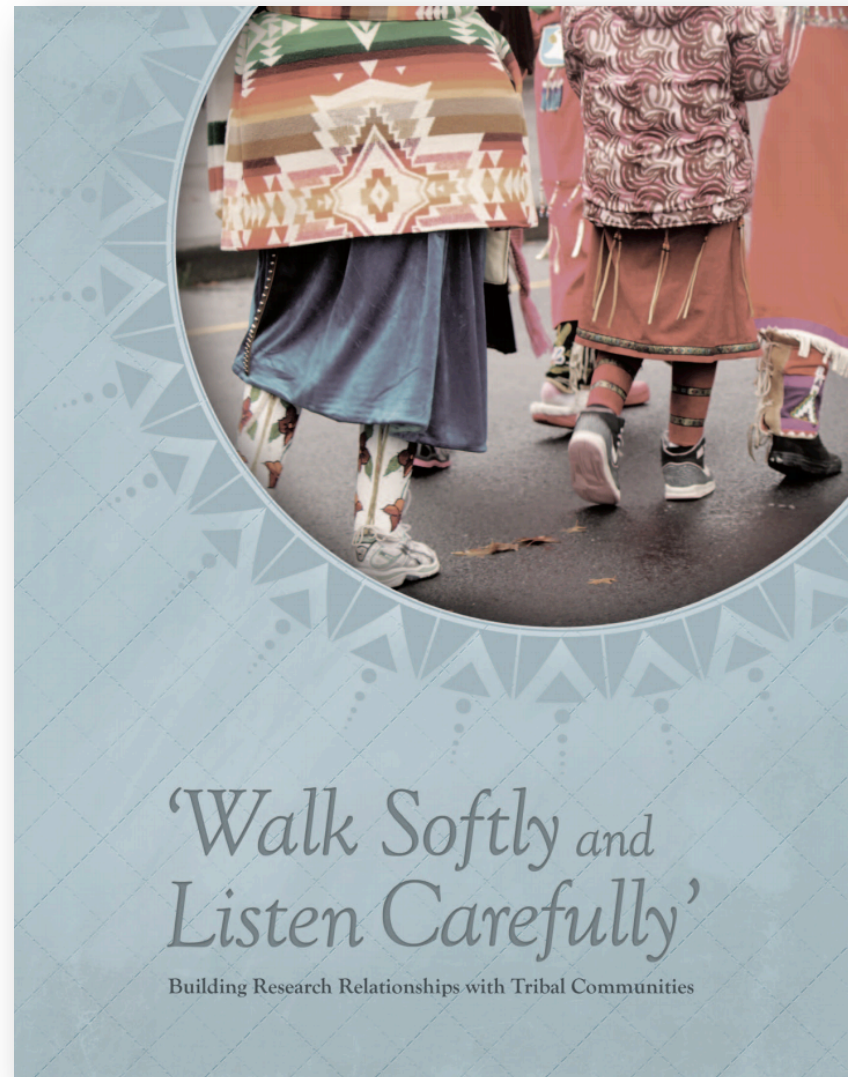


Resources

28

- Walk Softly and Listen Carefully
 - ▣ NCAI
 - ▣ CNHP
 - ▣ MSU

http://www.ncai.org/attachments/PolicyPaper_SpMCHTcjxRRjMEjDnPmesENPzjHTwhOIOWxIWdSrykJuQggG_NCAI-WalkSoftly.pdf



Discussion Time: Use the Chat Box...



Use the Chat Box
to tell us what
you think...

What do we
KNOW? What
can we *SHARE*?

Practice in Action



HEALTHY
NATIVE
YOUTH

Find Curriculum on Healthy Native Youth



Search for lessons, subjects and videos



HOME

CURRICULA & LESSONS

RESOURCES & SUPPORT

ABOUT

find curricula

RAISING HEALTHY NATIVE YOUTH THROUGH CULTURALLY RELEVANT HEALTH EDUCATION

ENGAGING. RELEVANT. EFFECTIVE.

HealthyNativeYouth.org contains health promotion curricula and resources for American Indian and Alaska Native

What do you KNOW? What can you SHARE?

32



1. Like or Follow *Healthy Native Youth* on Facebook or IG,
2. Post to the Group
3. Receive a back-to-school kit!



Instagram

Promotional Materials



**HEALTHY
NATIVE
YOUTH**

 www.healthynativeyouth.org
 [@healthyN8Vyouth](https://twitter.com/healthyN8Vyouth)
 Listserve: Text "YouthNews" to 22828
 Text Message: Text "Healthy" to 97779
 fb.com/HealthyNativeYouth
 native@npaihb.org



ENGAGING. RELEVANT. EFFECTIVE.

HealthyNativeYouth.org is a one-stop-shop to expand learning opportunities for Native youth. The site includes curricula, trainings, and tools to help you deliver age-appropriate health programs.





Thinking Ahead...

34

□ **Who Can I invite to the next call?**

Building Community Support: Creating Community Partnerships

Guest Speakers: Michelle Singer (Navajo) & Tommy Ghost Dog, Jr. (Oglala/Burns Paiute)

Date: Nov. 13th (Wed.), 10-11 am PST

□ **Ahead of the Game:**

- How do you approach folks who 'aren't convinced'?
- How can you improve your marketing and promotion plans?

COMMUNITY OF PRACTICE

2019-2020 Schedule

**Second
Wednesday of
Every Month**

10:00-11:00 AM PST

- **9/11/19** Welcome to Healthy Native Youth 2.0! What's Available & What's New
- **10/9/19** Intro to Evaluation: Gathering Info to Improve Programs
- **11/13/19** Building Community Support: Creating Community Partnerships
- **12/11/19** "All Relations" Communications: Broaching "The Talk" & Other Sensitive Topics
- **1/8/20** Whose the Best Health Educator Around? Brush up on your Programming & Youth Skills
- **2/12/20** LGBTQ2S Inclusion in the Community & Classroom
- **3/11/20** Supporting Youth Experiencing Trauma in the Classroom & Beyond
- **4/8/20** Social Media: How to do It & Keep Youth Safe!
- **5/13/20** Youth Identity & Healthy Relationships
- **6/10/20** Prevention: Emerging Topics & Challenges Youth Face
- **7/8/20** Raising Healthy Native Youth: Creating Positive Pathways



**HEALTHY
NATIVE
YOUTH**

How to Join

**AT THE TIME OF MEETING,
JOIN US VIA ZOOM:
[HTTPS://ECHO.ZOOM.US/J/45
8332611](https://echo.zoom.us/j/458332611)**

**JOIN BY PHONE ONLY:
+1 669 900 6833**

Thank you! Other questions?

36

Contact:

Amanda Gaston

agaston@npaihb.org



This project is funded by the Indian Health Service HIV and behavioral health programs. This work is also supported with funds from the Secretary's Minority AIDS Initiative Fund.



HEALTHY
NATIVE
YOUTH



HEALTHY NATIVE YOUTH

INTRO TO EVALUATION: GATHERING INFO TO IMPROVE PROGRAMS

GUEST SPEAKERS: ALEXIS CONTRERAS (NICWA) & NICOLE TREVIÑO (NICOLE TREVIÑO CONSULTING)

October 9, 2019, from 10-11 am PST