



# Healthy Native Youth COMMUNITY OF PRACTICE

# Hello!

## I am Sarah Schroeder

Find me at @edtech4change or  
sarah.schroeder@uc.edu





# Key Shared Terminology

- **Synchronous:** happening at the same time
- **Asynchronous:** happening individually not at the same time
- **Blended:** including some components of online and face-to-face learning
- **Remote:** in different places
- **Bandwidth:** how much data your internet connection can handle



Let's Check In

---

Mentimeter



Students browse: [www.menti.com/7ra7fep9s8](https://www.menti.com/7ra7fep9s8)



How does this picture make you feel?

What do you notice about this picture?

What do you wonder?



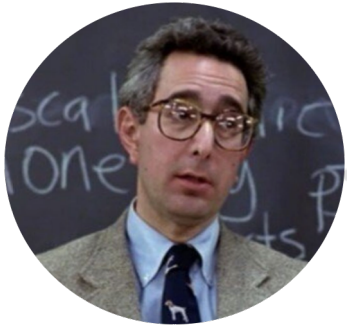
Students, write your response!

1.

# What is Engagement?

Let's compare it to entertainment...

# Who are you channeling lately?



Students, drag the icon!



Pear Deck Interactive Slide  
Do not remove this bar



*Some teachers are naturally  
compelling and intuitively spark a zest  
for learning in students.*

*But most of us have to work at it.*

*-Sara Rose Cavanagh,  
Chronicle of Higher Education*



# How do we define “Engagement”?

How do we know students are engaged?



Students, write your response!

# Engagement vs. Entertainment

- ⦿ Activity does not = Engagement.
- ⦿ You can't observe engagement.
- ⦿ Entertainment isn't bad.
- ⦿ Engagement IS active.
  - Mental activity
  - Physical activity



## Entertainment

- Students learn passively
- Students are repeating
- Students are attentive
- Students are focused on the task
- Students are compliant

Content focused  
Teacher driven

## Engagement

- Students learn actively
- Students are creating
- Students are committed
- Students are focused on the skill or learning
- Students are motivated

Learner focused  
Learner driven



Studies on engagement uncovered that while students may be physically present and appear to be actively involved in using the technology tools, in reality they might still be cognitively disengaged from the learning goals.

(Linnenbrink & Piintrich, 2003)

# Levels of Student Engagement

based on P. Schlechty and visualization by R. Rios





What makes us want to learn?  
What motivates us?



Students, write your response!

# Keller's ARCS Model of Motivation




[Image Source: Shift eLearning](#)



Students choose an option





**There is not one means of  
engagement that is optimal  
for all learners.**

WE = NATIVE  
-CAST, UDL Guidelines

2.

What tools can we use?

And how do we choose them?



How does this picture make you feel?

What do you notice about this picture?

What do you wonder?



# Logging In / Creating Accounts

## Educator Login

If you don't have an account, let's [create one](#)!



Did you sign up with an email and password?

[Log in here.](#)



# How familiar are you with each tool?



NEVER  
SEEN IT



ROCK  
STAR



Students, drag the icon!

Pear Deck Interactive Slide  
Do not remove this bar

# Using Asynchronous Tools



**Flipgrid**



EDpuzzle

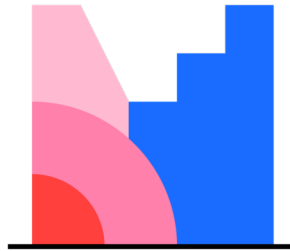


[Genial.ly](https://genial.ly)

# Using Synchronous Tools



Peardeck



Mentimeter



# Other Polling Tools



Socrative	Synchronous & Asynchronous	Simple, clean and accessible. Group and individual modes.
Quizlet & Quizlet Live	Synchronous & Asynchronous	Highly accessible with a wide range of delivery modes.
Quizizz	Asynchronous / Individually Pace	Good when students need to work at their own pace.
Kahoot	Synchronous	High energy and competitive. Can be distracting. Lacks some accessibility.

# 3.

## How will we adjust our practice?

Let's work together on this!



Students browse: [docs.google.com/presentation/d/12MqqMJouFU5qEcN\\_bvz1GN7n1RipiSxhVg...](https://docs.google.com/presentation/d/12MqqMJouFU5qEcN_bvz1GN7n1RipiSxhVg...)

Pear Deck Interactive Slide  
Do not remove this bar

# What do we notice? What do we wonder?

STEP 1: Review each others' ideas

STEP 2: Look for 1 activity you LOVE (and why)

STEP 3: Look for commonalities

STEP 4: Decide who from your group will share!



Students, write your response!

4.

What are our challenges?

And how do we overcome them?







Working Memory has Limited Capacity.  
(what our brain can handle at one time)

# What challenges are you facing in delivering learning online or blended?

- ▷ Delivery
- ▷ Engagement
- ▷ Access
- ▷ Retention/application
- ▷ Other?



Students, write your response!

# Thanks!

## Any questions?



Students, write your response!

# Credits

Special thanks to all the people who made and released these awesome resources for free:

- ▷ Presentation template by [SlidesCarnival](#)
- ▷ Photographs by [Unsplash](#)

# Presentation design

This presentations uses the following typographies and colors:

- ▷ Titles: **Raleway**
- ▷ Body copy: **Lato**

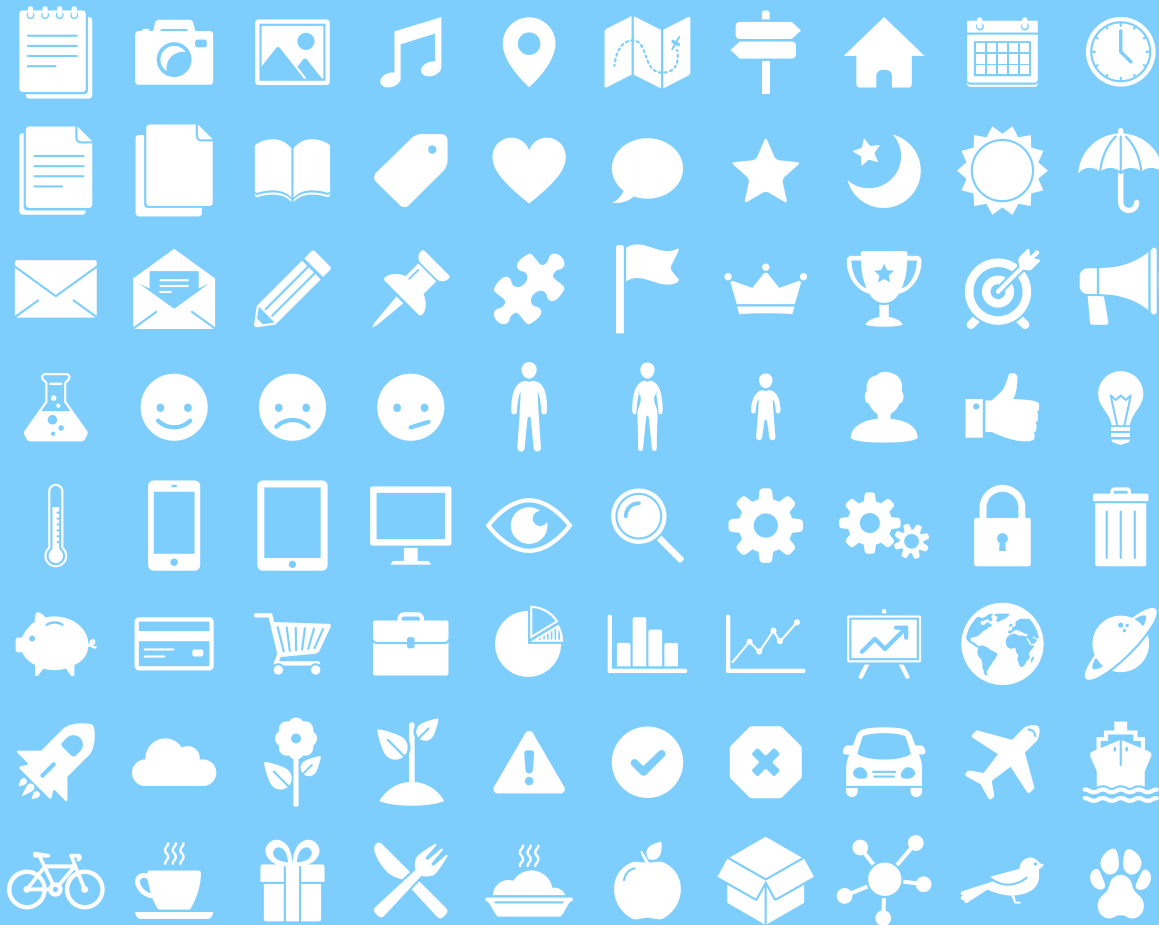
You can download the fonts on these pages:

<https://www.fontsquirrel.com/fonts/raleway>

<https://www.fontsquirrel.com/fonts/lato>

- ▷ Dark blue **#2185c5**
- ▷ Light blue **#7ecef**
- ▷ Yellow **#ff9715**
- ▷ Magenta **#f20253**
- ▷ Dark gray **#677480**
- ▷ Light gray **#97abbc**

*You don't need to keep this slide in your presentation. It's only here to serve you as a design guide if you need to create new slides or download the fonts to edit the presentation in PowerPoint®*



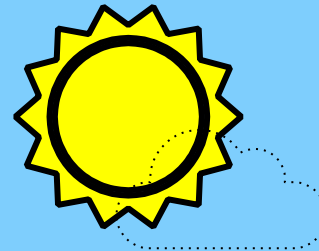
SlidesCarnival icons are editable shapes.

This means that you can:

- Resize them without losing quality.
- Change fill color and opacity.
- Change line color, width and style.

Isn't that nice? :)

Examples:



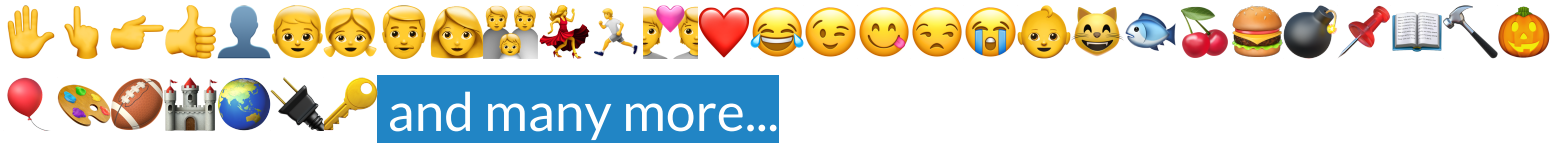


**Now you can use any emoji as an icon!**

And of course it resizes without losing quality and you can change the color.

How? Follow Google instructions

<https://twitter.com/googledocs/status/730087240156643328>







**Free templates for all your presentation needs**



For PowerPoint and  
Google Slides



100% free for personal  
or commercial use



Ready to use,  
professional and  
customizable



Blow your audience  
away with attractive  
visuals